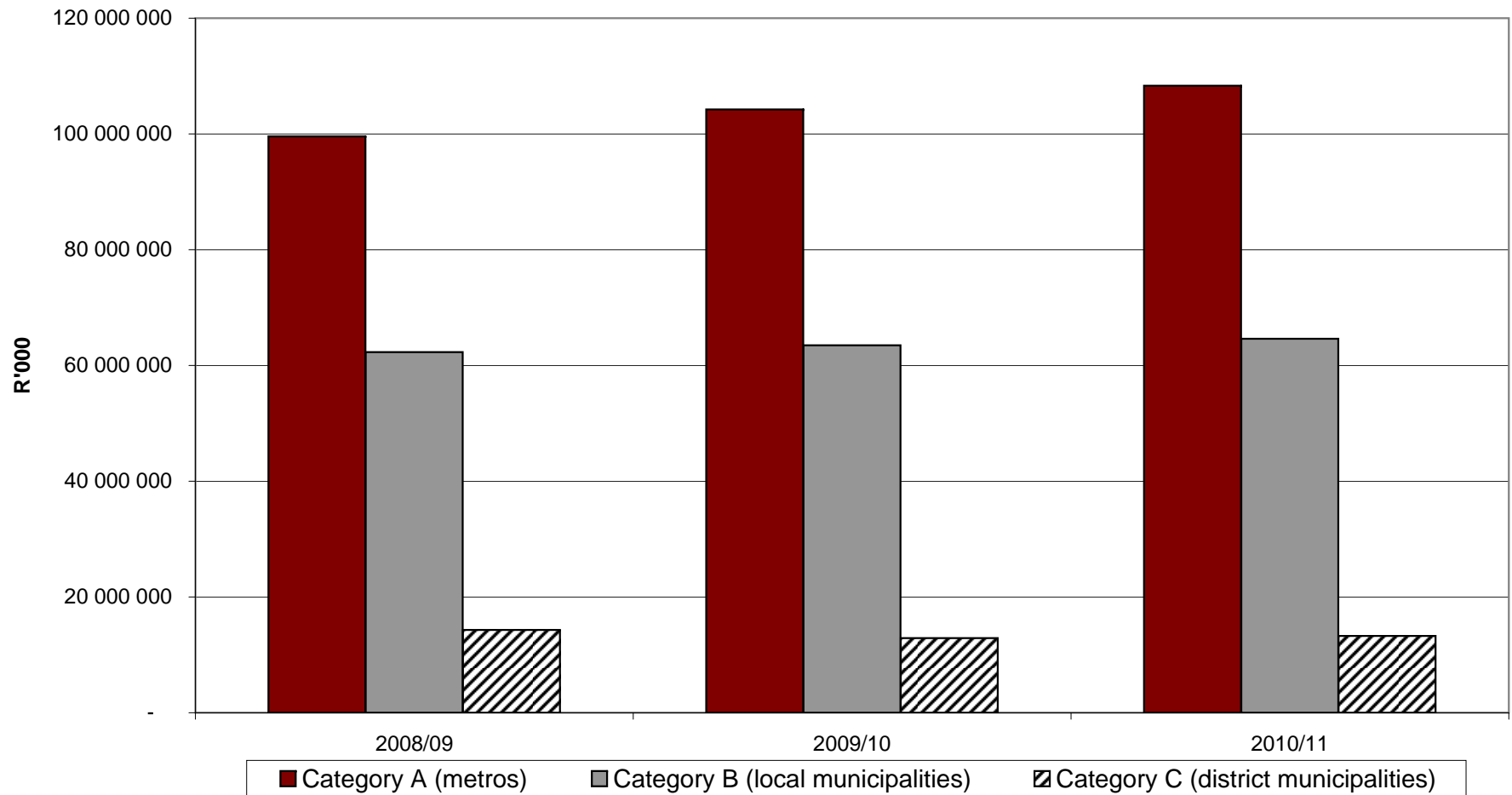
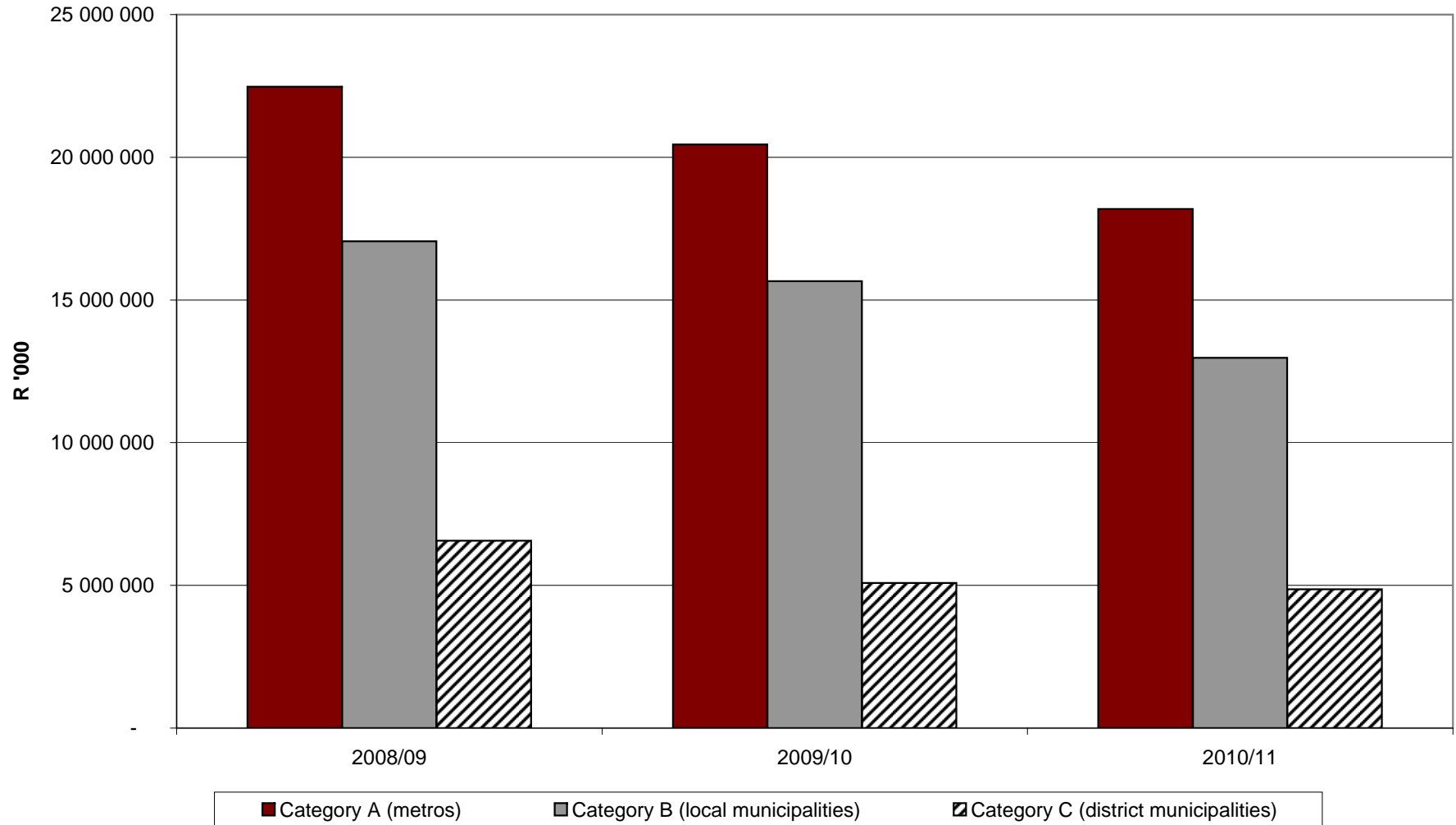


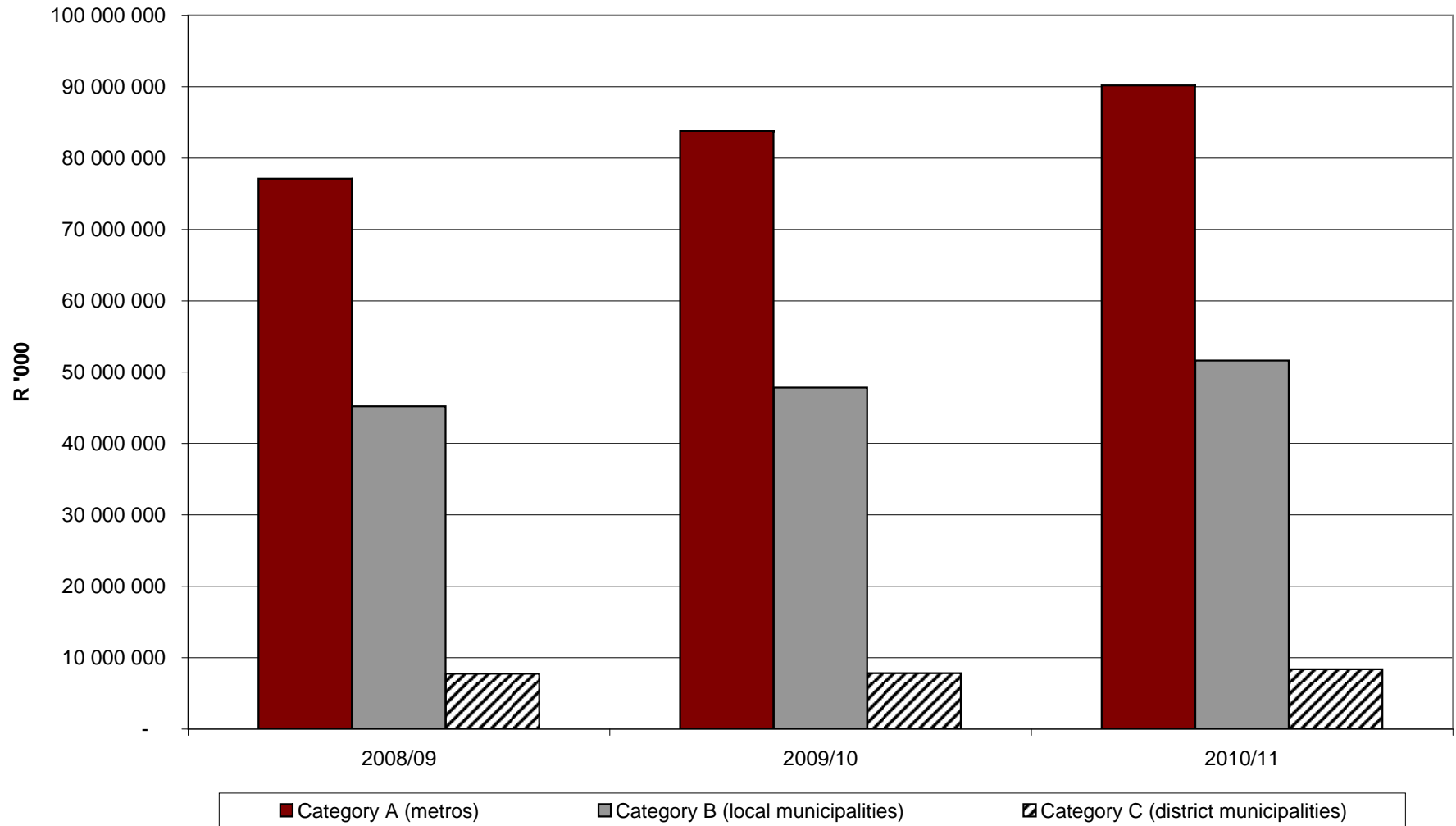
**Figure 1: Aggregated budgeted expenditure per category,  
2008/09 - 2010/11**



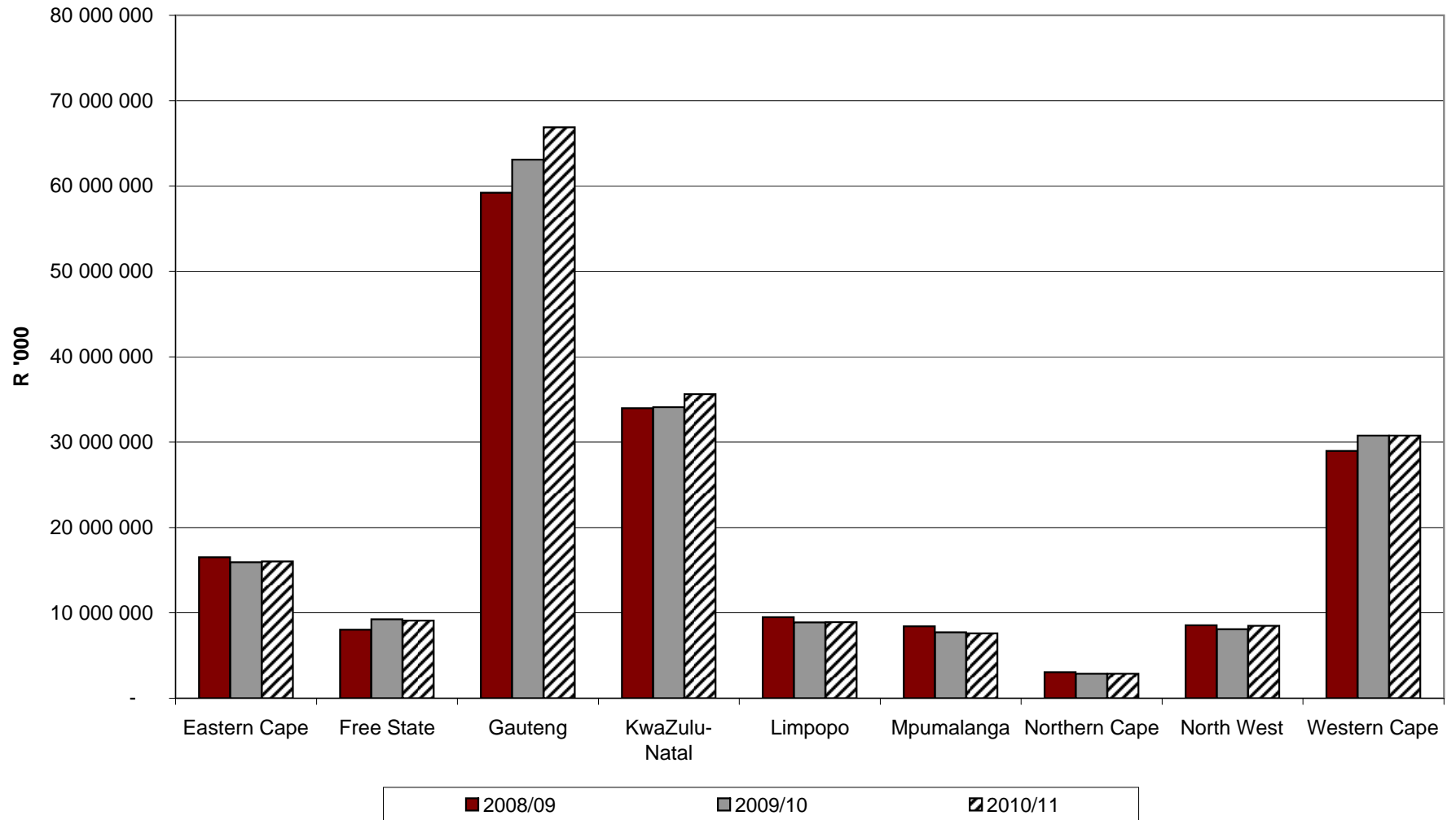
**Figure 1.1: Budgeted capital expenditure per category,  
2008/09 - 2010/11**



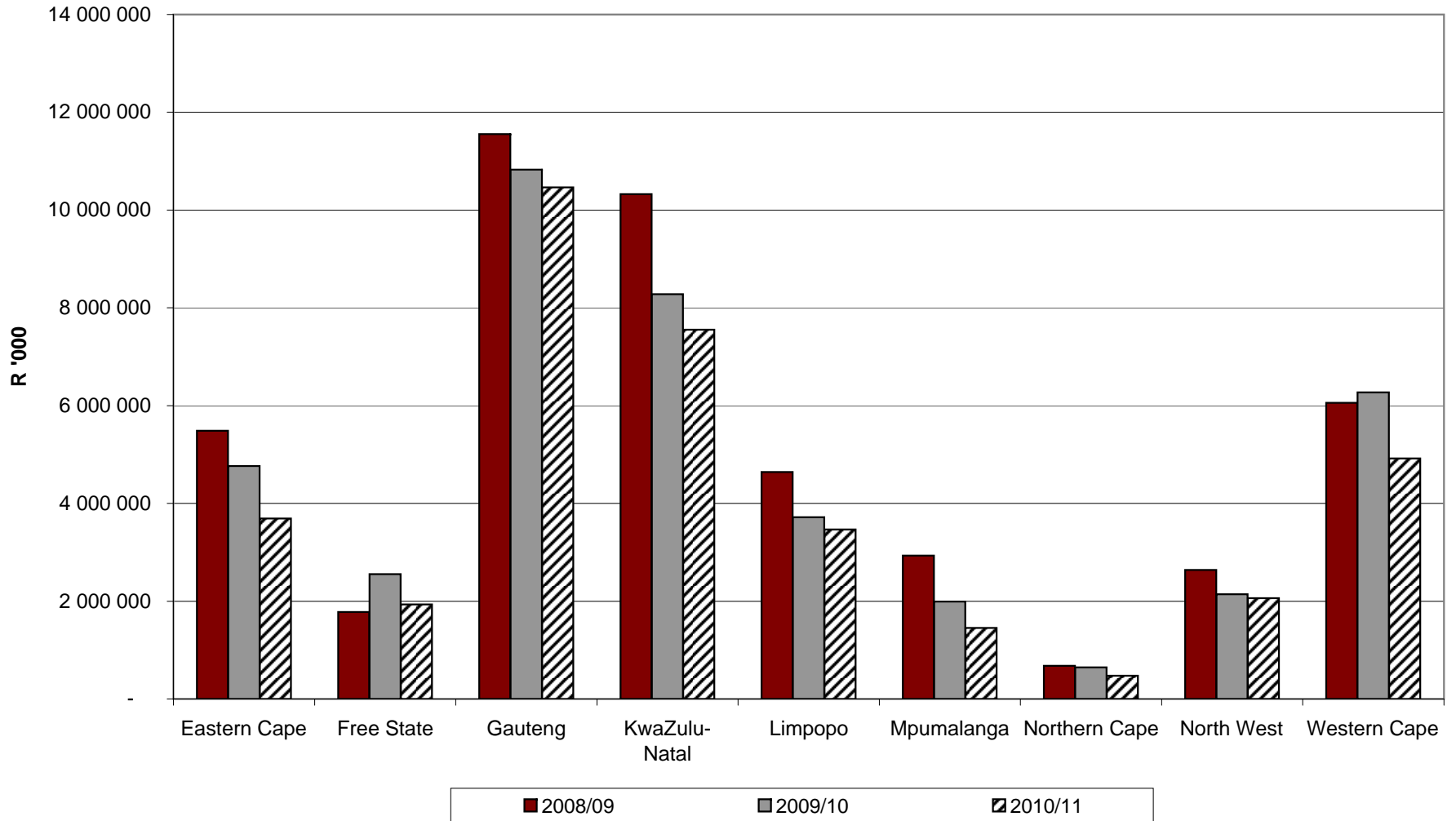
**Figure 1.2: Budgeted operating expenditure per category,  
2008/09 - 2010/11**



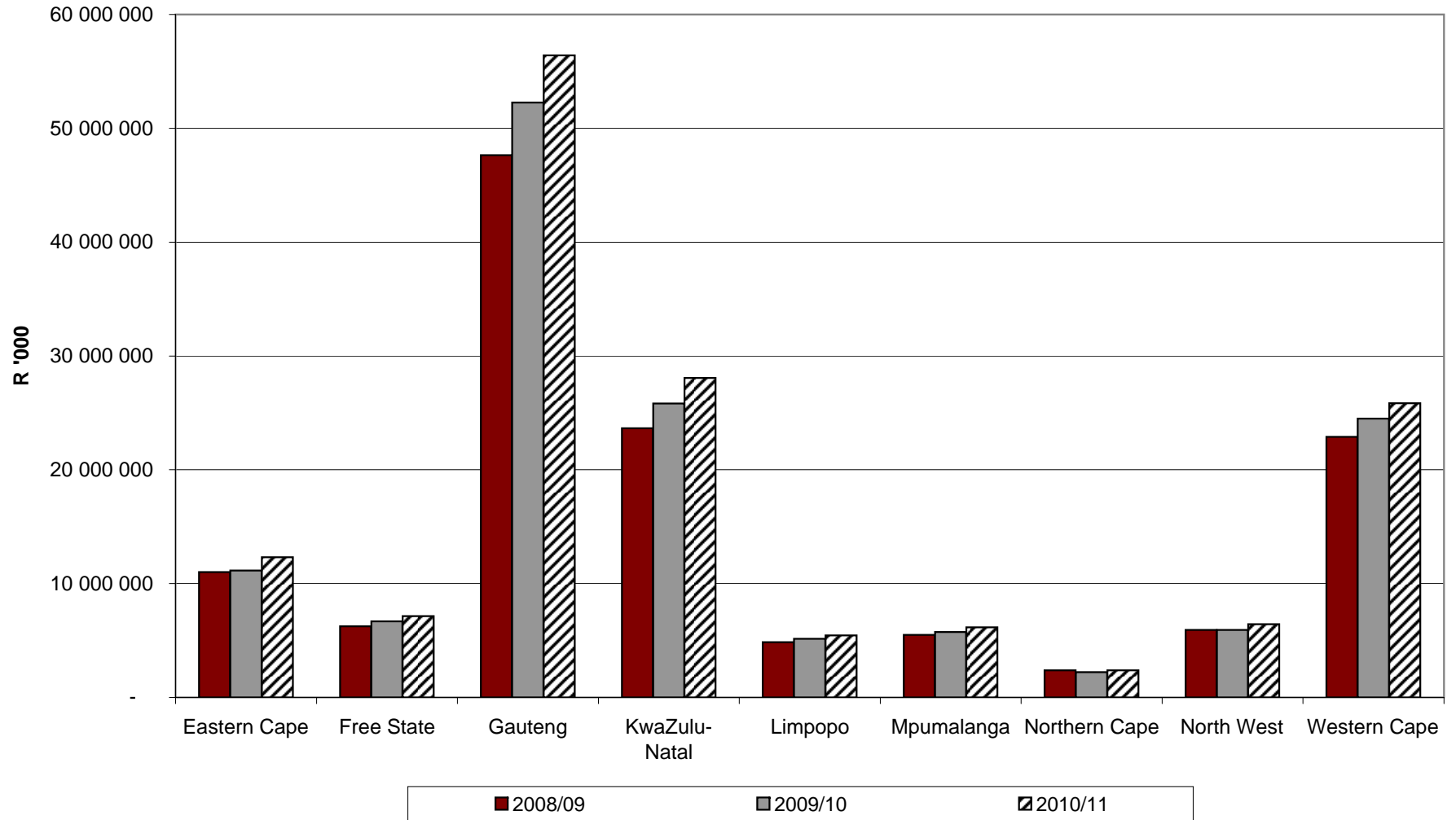
**Figure 2: Total operating and capital expenditure per province, 2008/09 - 2010/11**



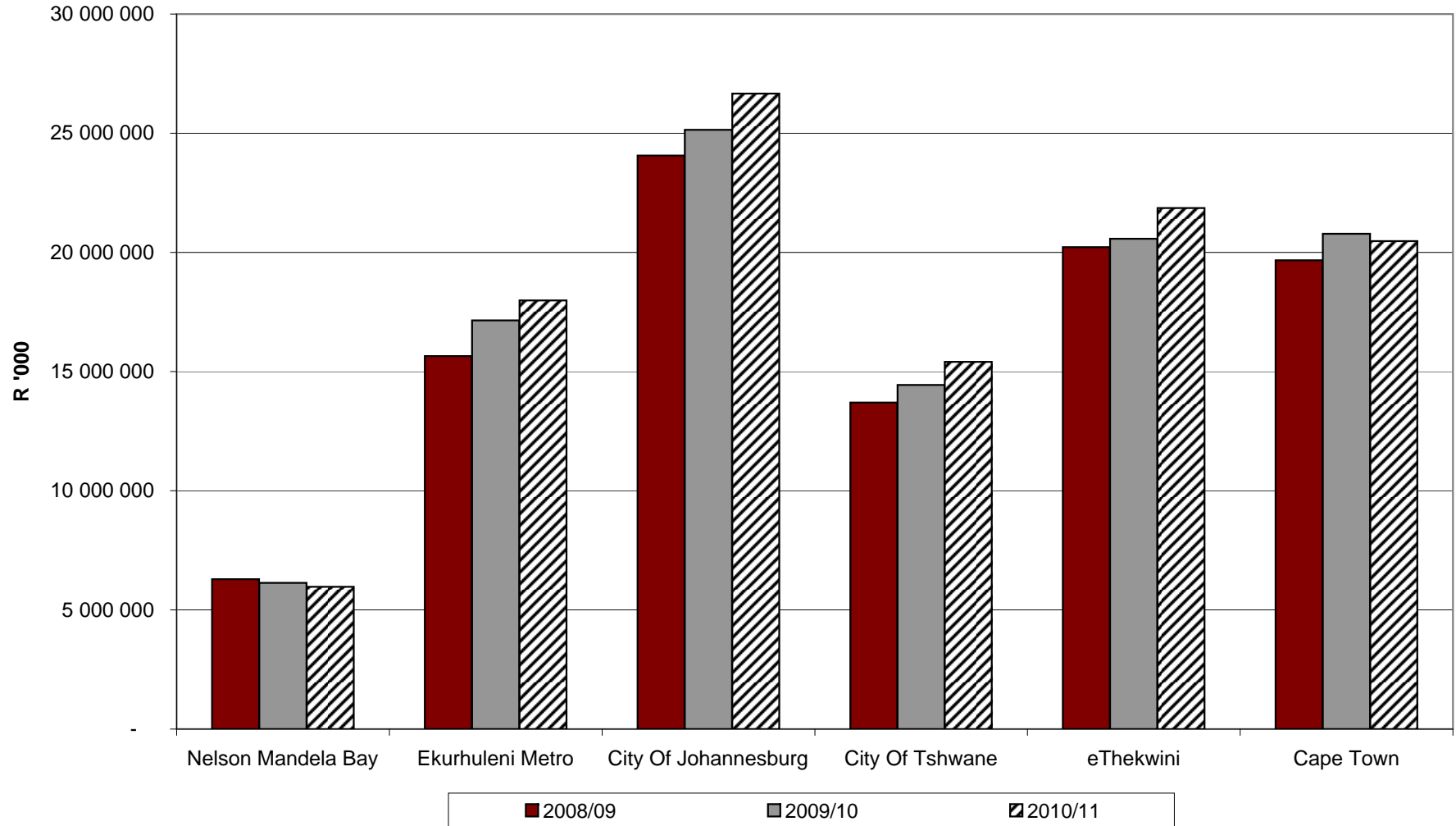
**Figure 2.1: Budgeted capital expenditure per province,  
2008/09 - 2010/11**



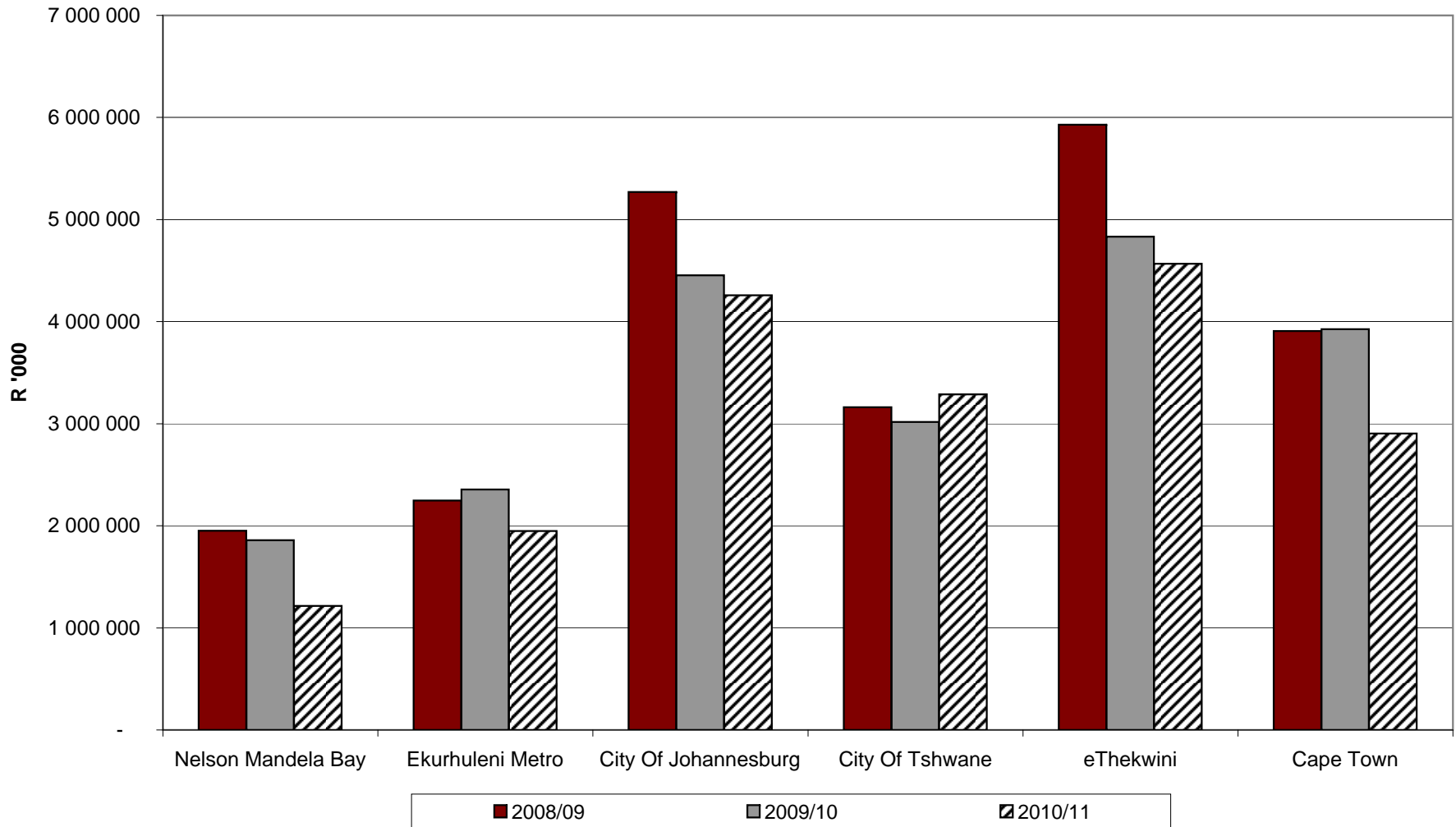
**Figure 2.2: Budgeted operating expenditure per province, 2008/09 - 2010/11**



**Figure 3: Aggregated budgeted expenditure for metros,  
2008/09 - 2010/11**

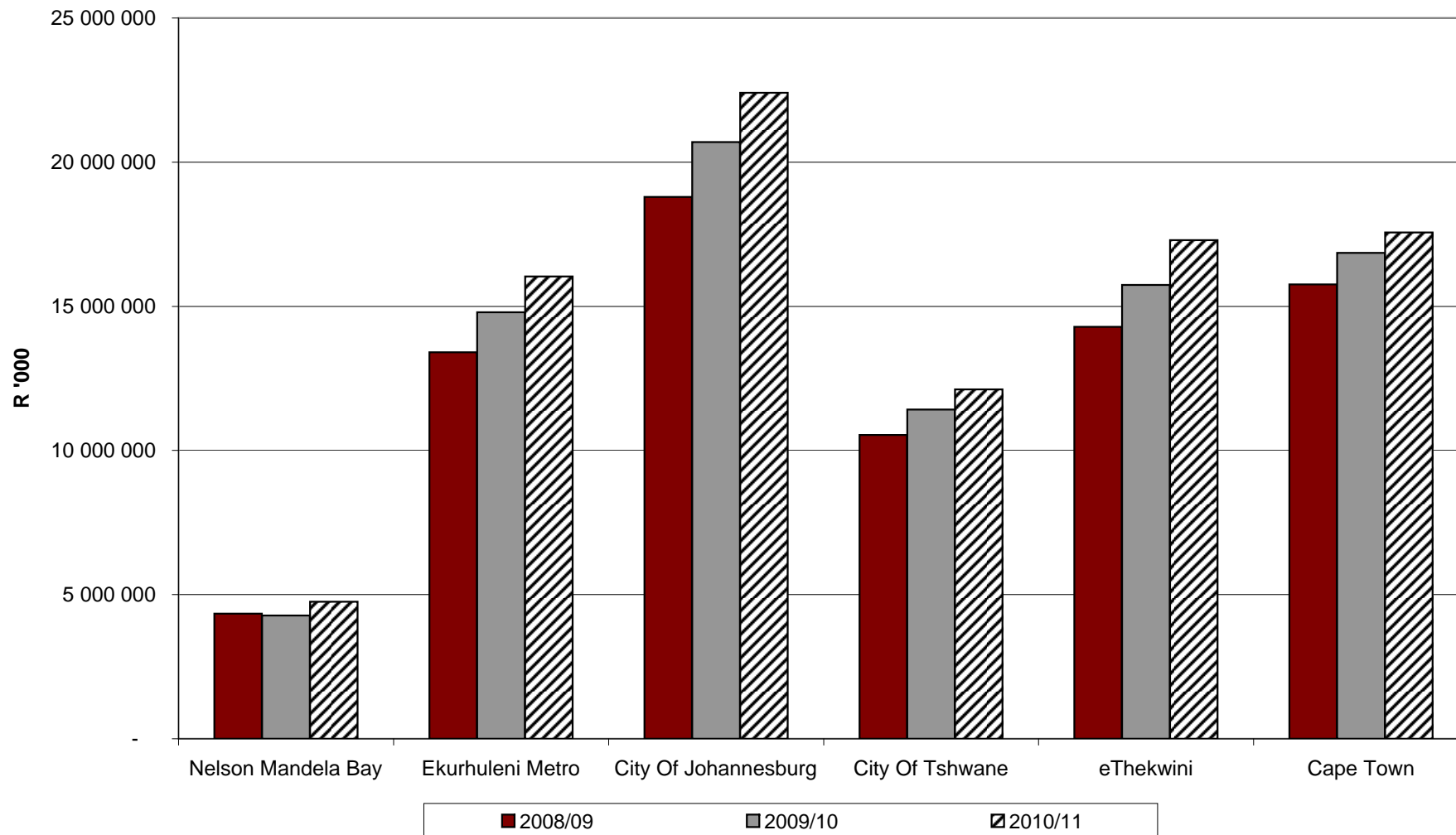


**Figure 3.1: Budgeted capital expenditure per metro, 2008/09 - 2010/11**

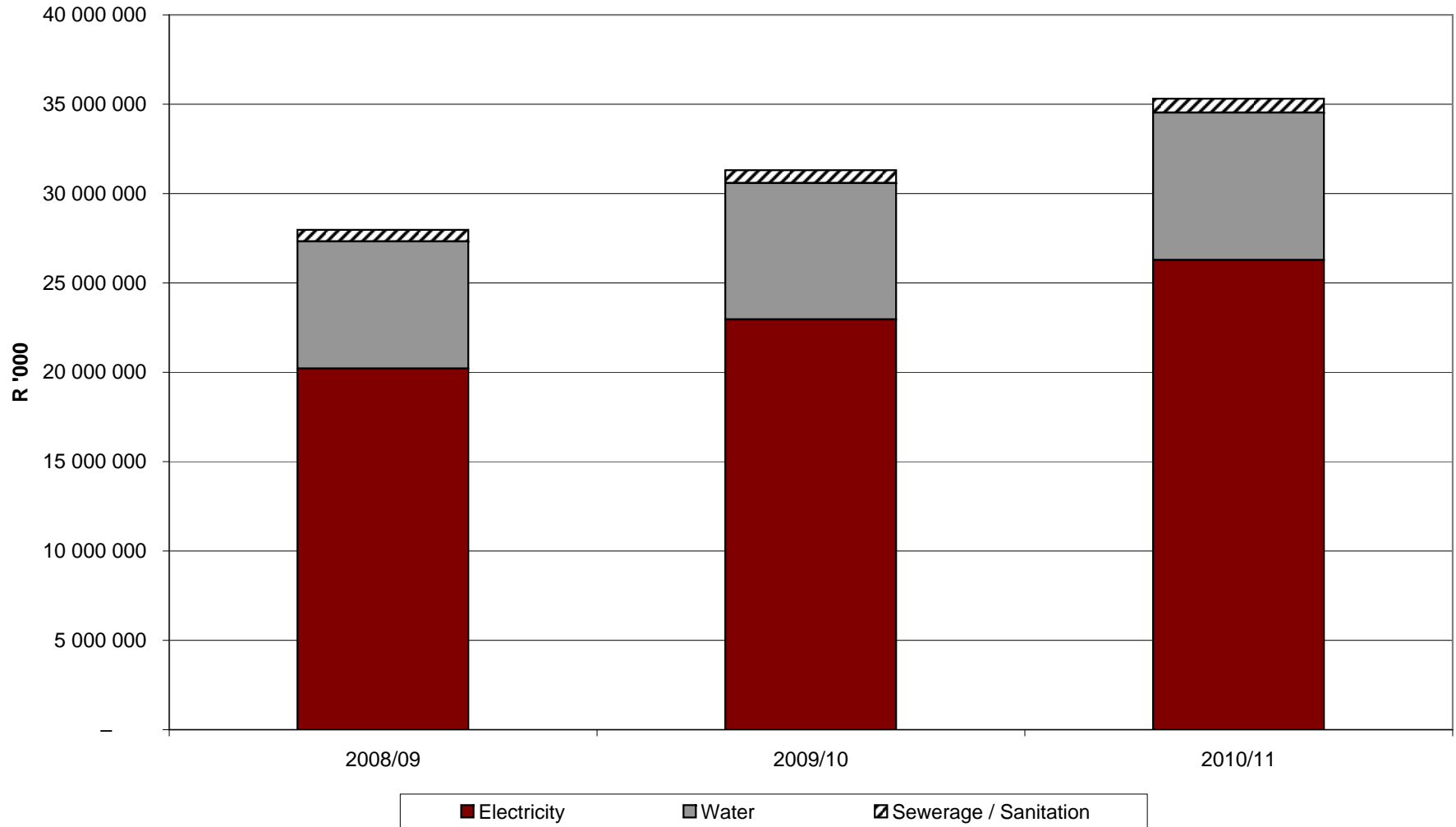




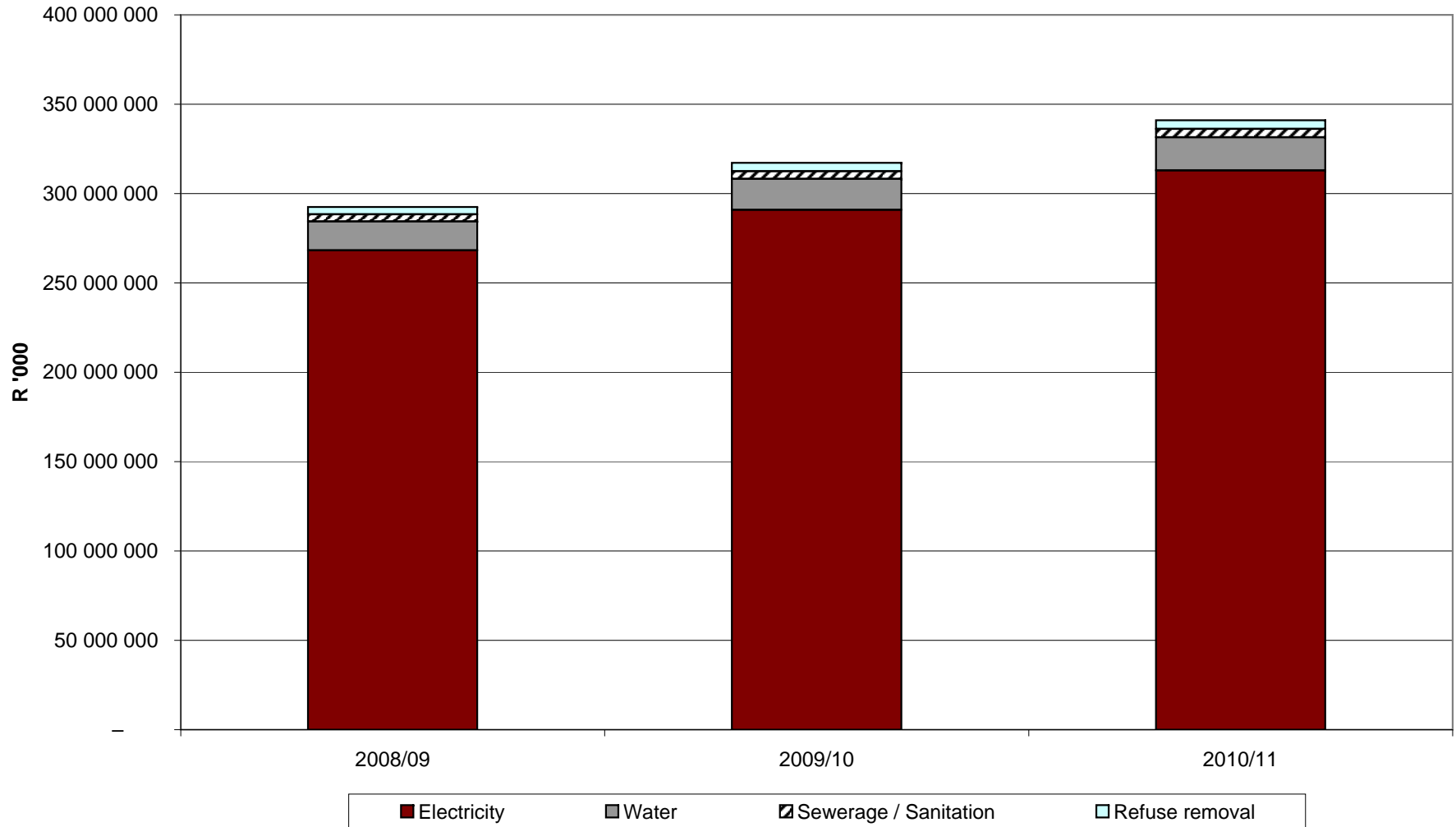
**Figure 3.2: Budgeted operating expenditure per metro, 2008/09 - 2010/11**



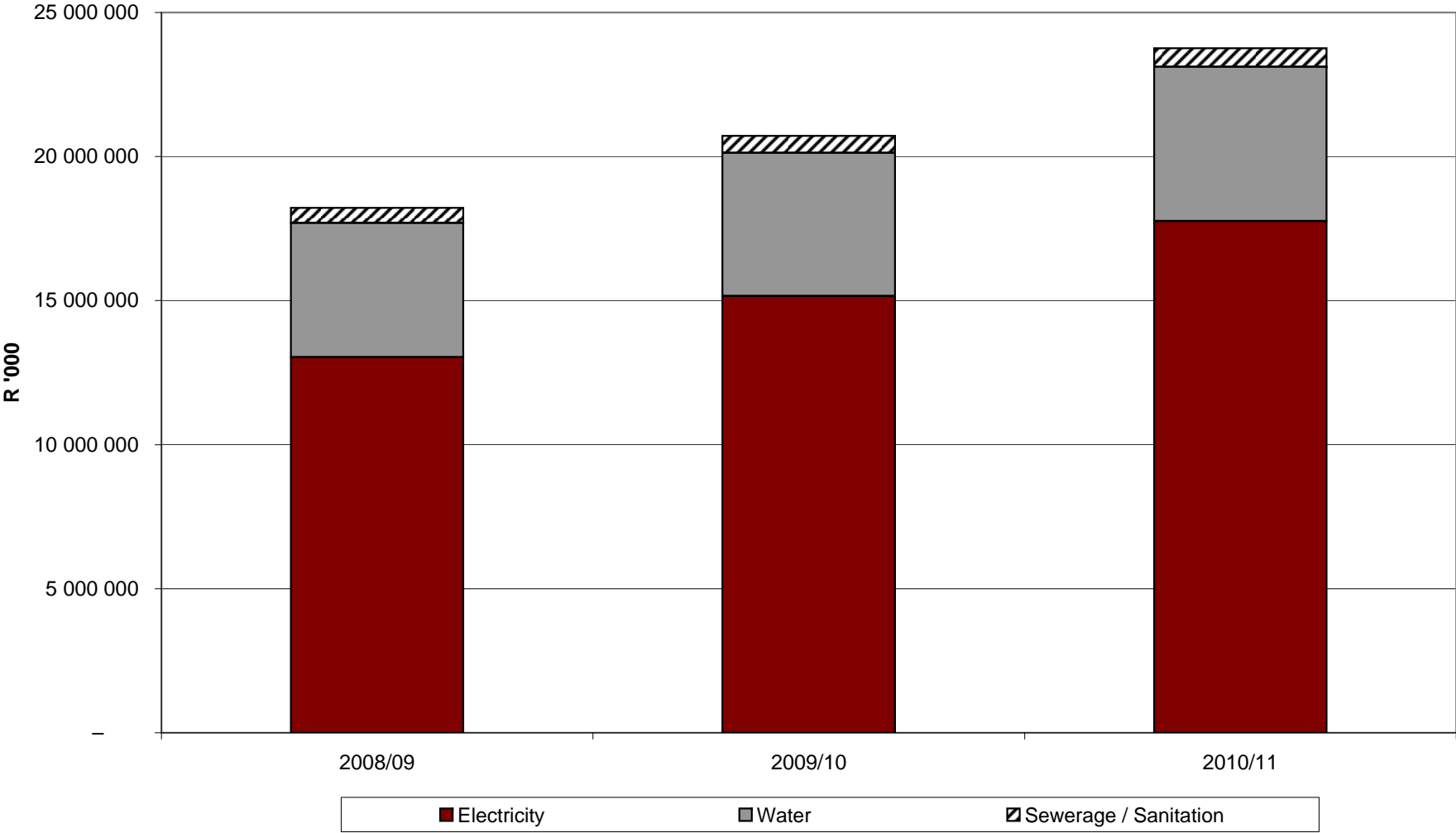
**Figure 4.1: Aggregated National budgeted expenditure for services, 2008/09 - 2010/11**



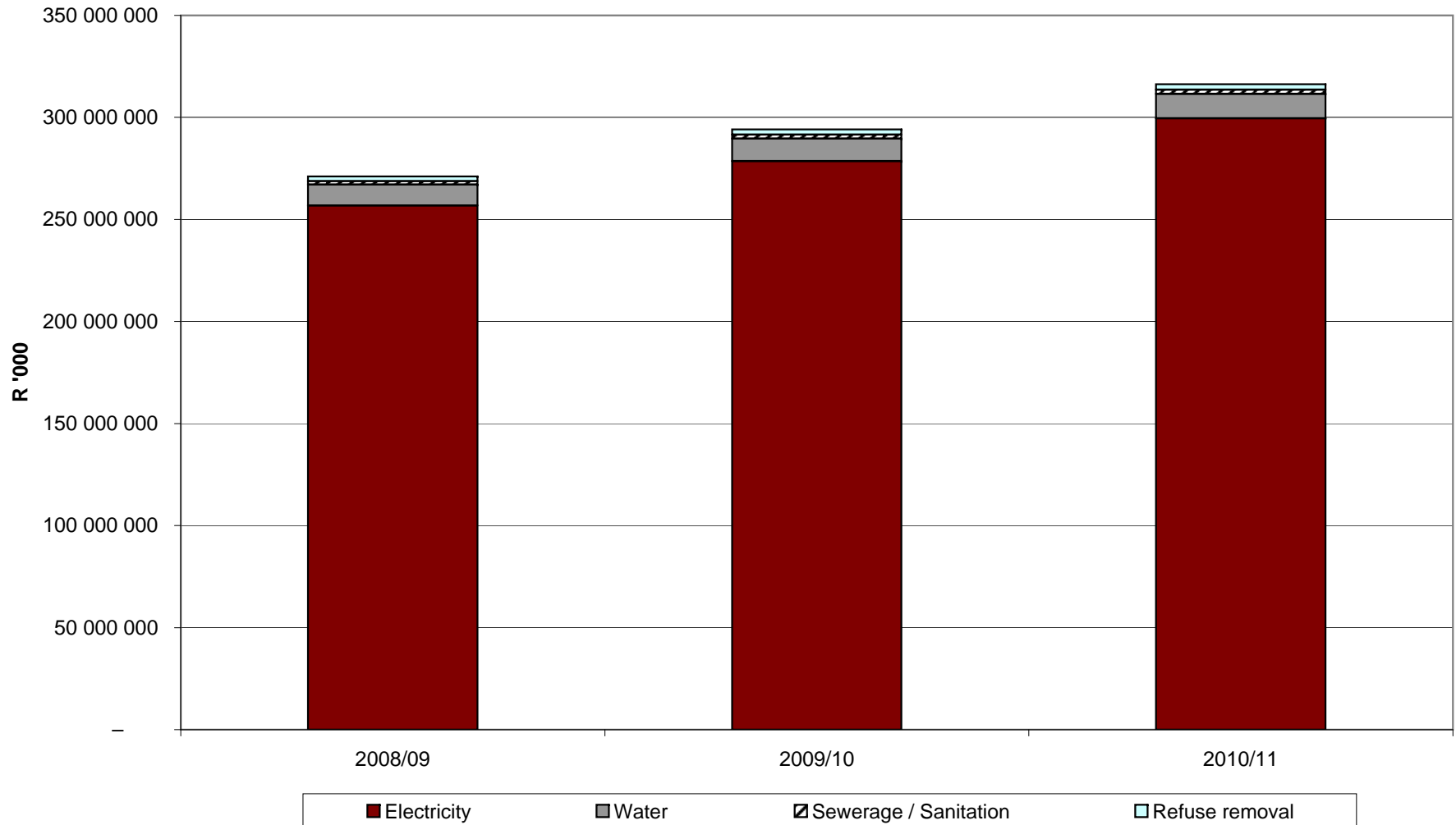
**Figure 4.2: Aggregated National budgeted revenue for services, 2008/09 -2010/11**



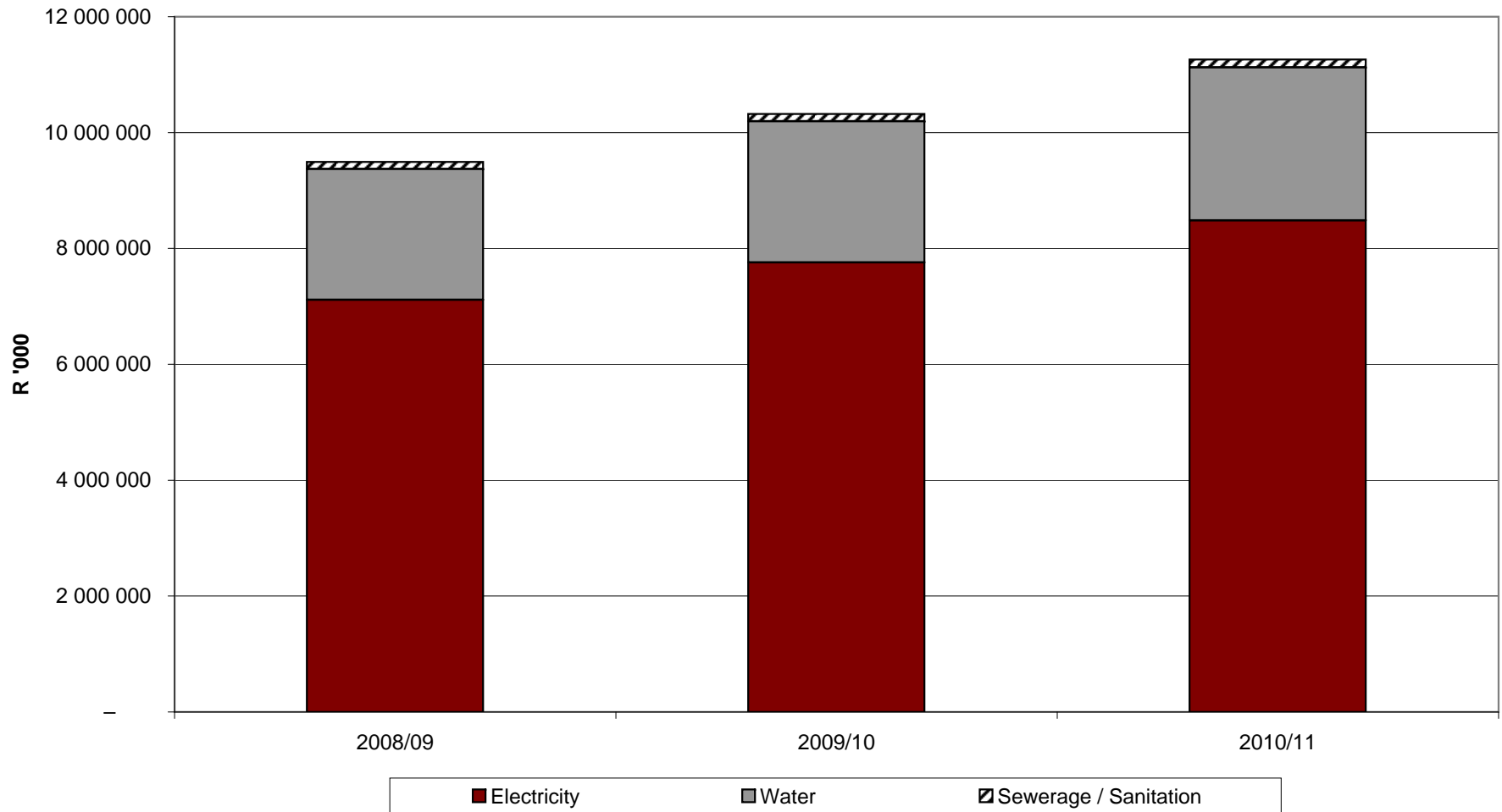
**Figure 4.3: Aggregated budgeted expenditure for services by metros, 2008/09 - 2010/11**



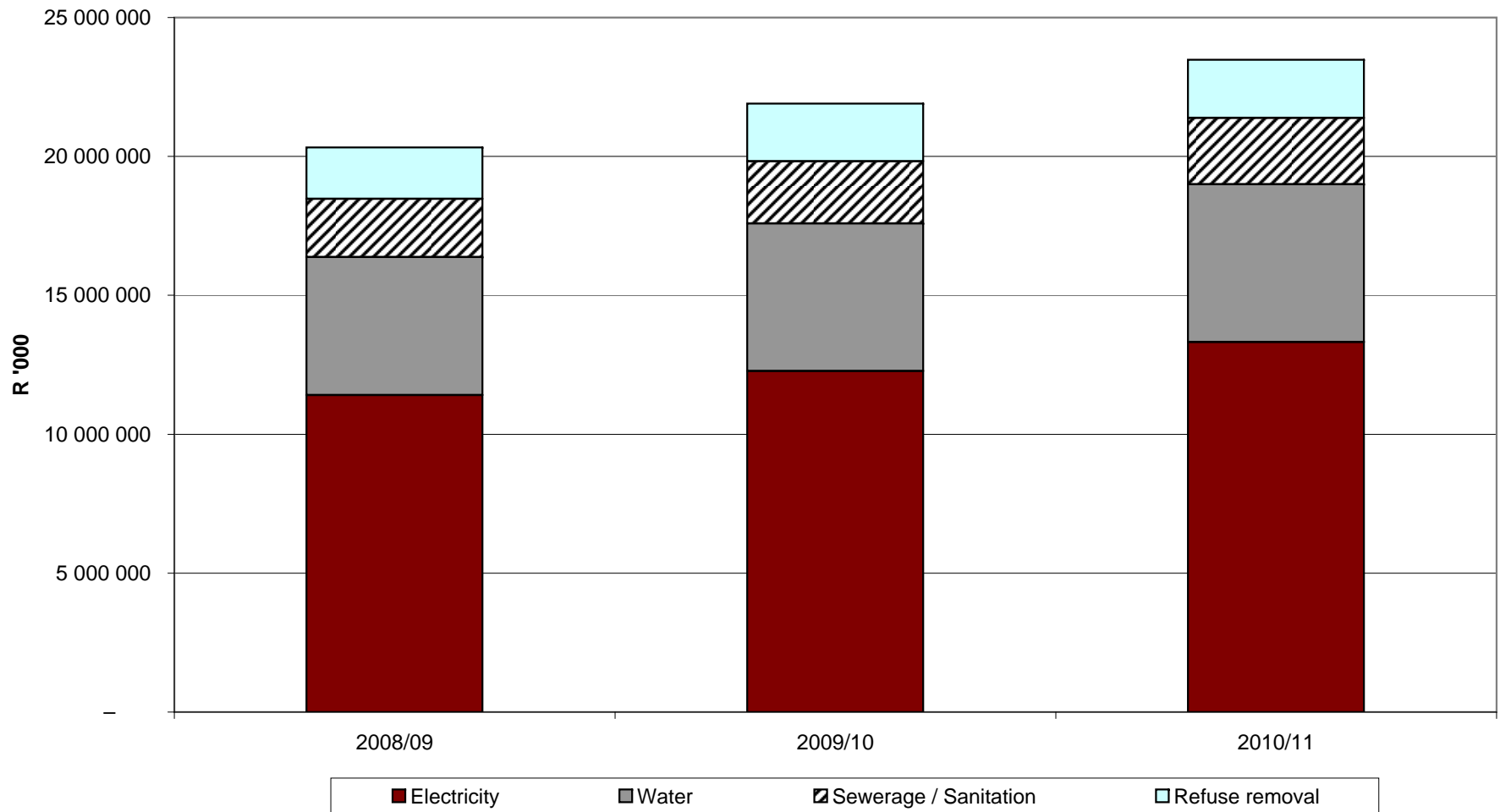
**Figure 4.4: Aggregated budgeted revenue for services by metros, 2008/09 - 2010/11**



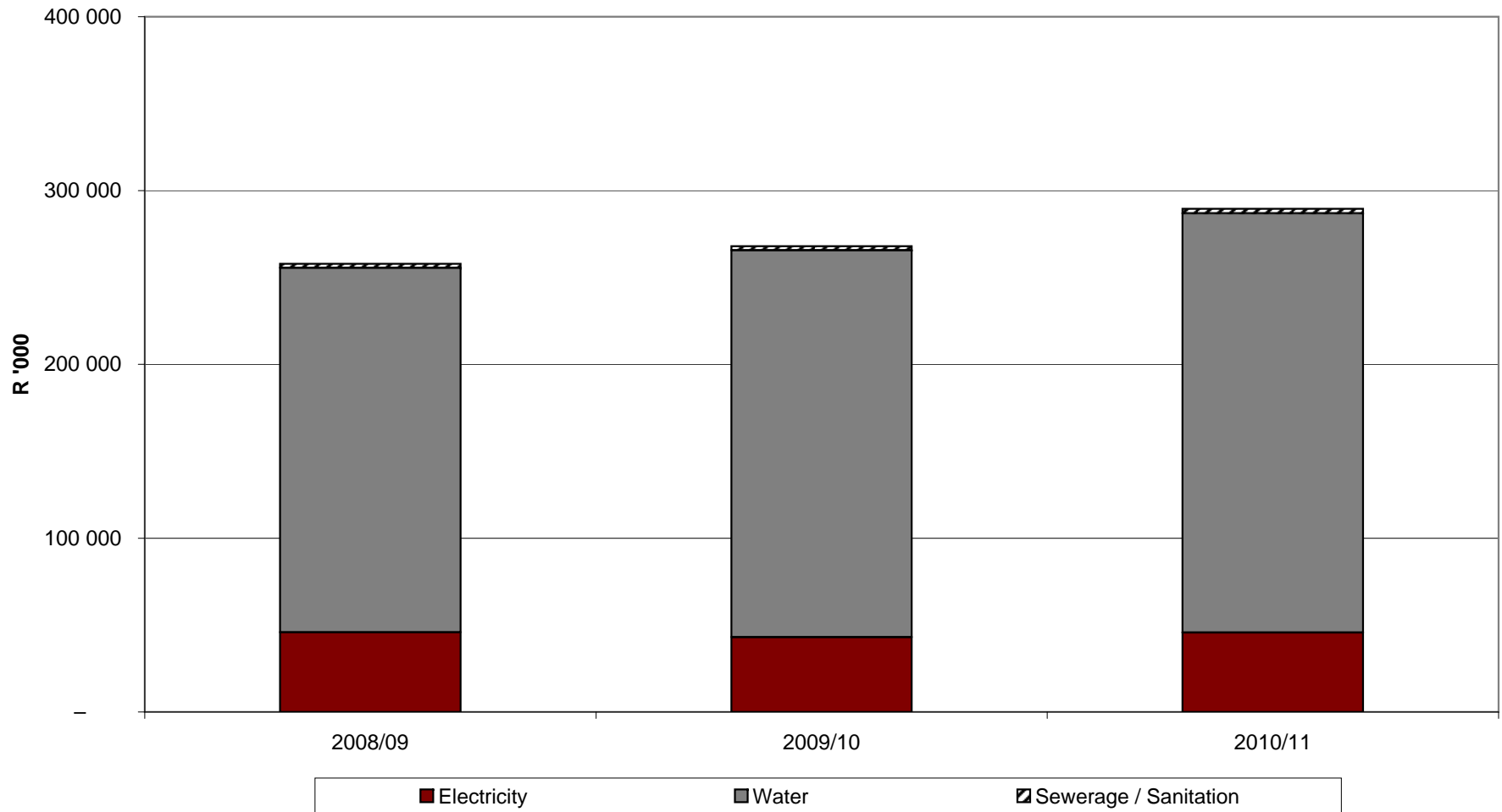
**Figure 4.5: Aggregated budgeted expenditure for services by local municipalities, 2008/09 - 2010/11**



**Figure 4.6: Aggregated budgeted revenue for services by local municipalities, 2008/09 - 2010/11**

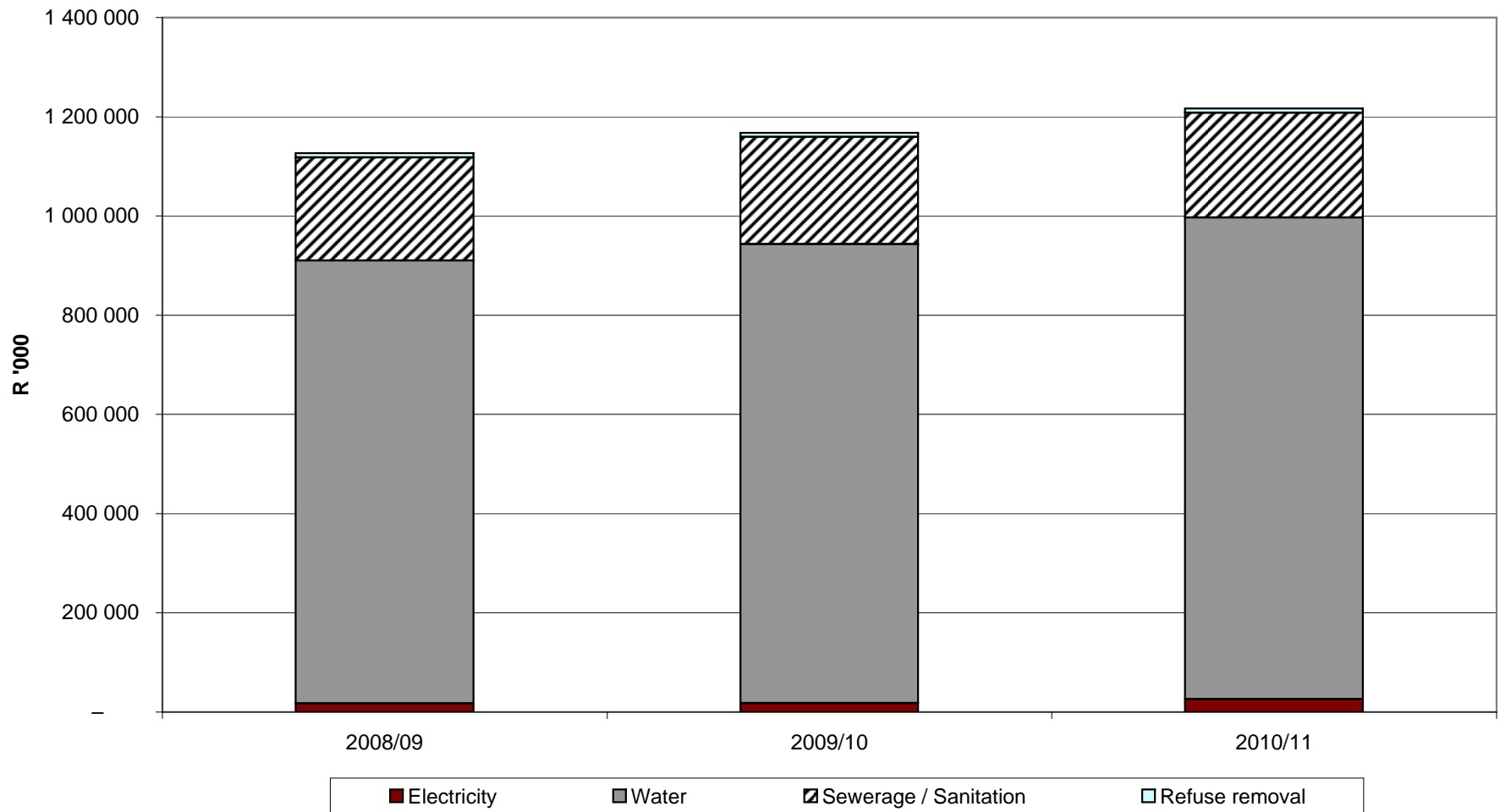


**Figure 4.7: Aggregated budgeted expenditure for services by district municipalities, 2008/09 -2010/11**

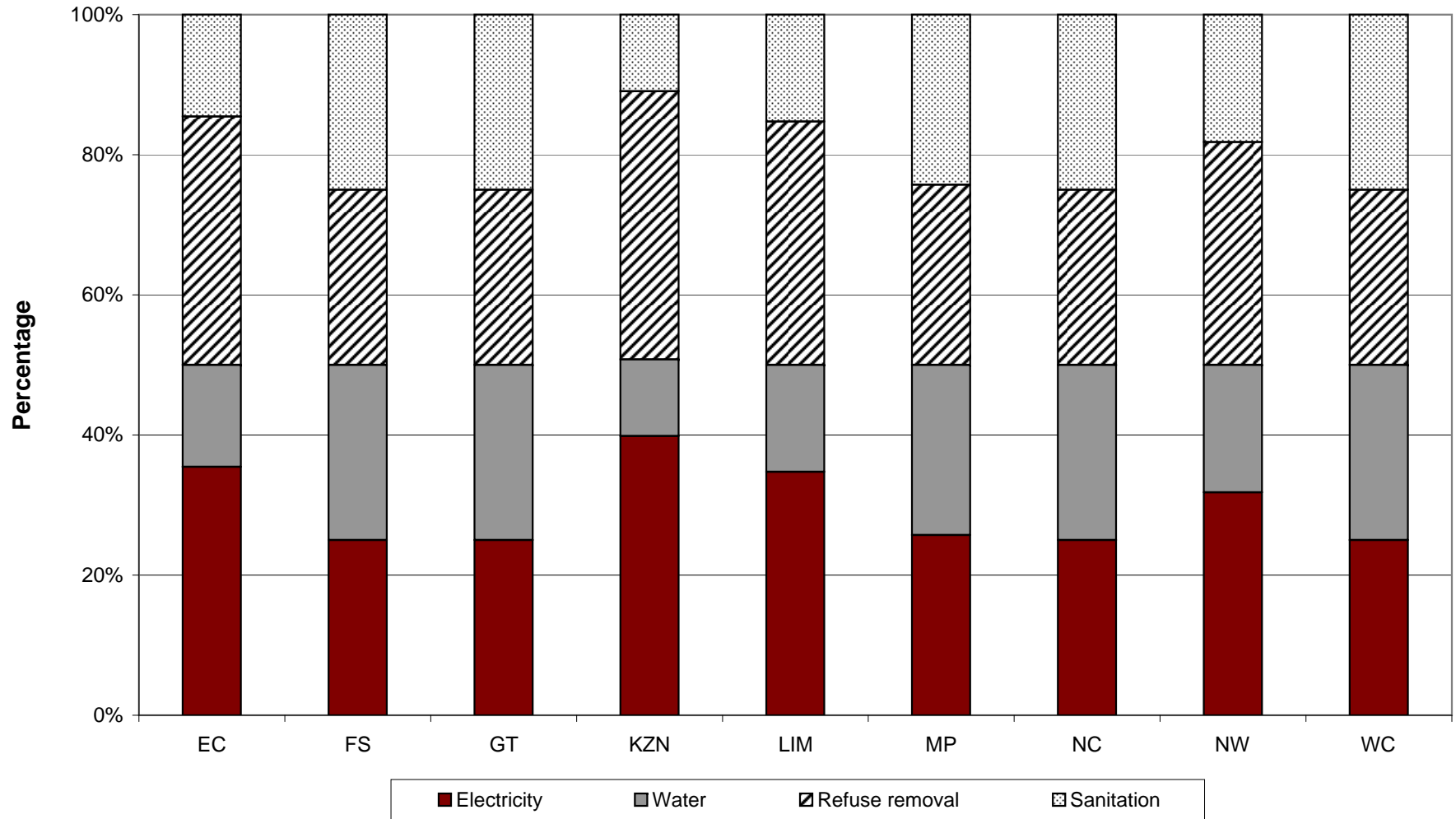




**Figure 4.8: Aggregated budgeted revenue for services by district municipalities, 2008/09 - 2010/11**



**Figures 5: Powers and functions**



## POWERS AND FUNCTIONS

| Province     | Electricity | Water      | Refuse removal | Sanitation |
|--------------|-------------|------------|----------------|------------|
| EC           | 39          | 16         | 39             | 16         |
| FS           | 20          | 20         | 20             | 20         |
| GT           | 11          | 11         | 11             | 11         |
| KZN          | 51          | 14         | 49             | 14         |
| LIM          | 25          | 11         | 25             | 11         |
| MP           | 18          | 17         | 18             | 17         |
| NC           | 27          | 27         | 27             | 27         |
| NW           | 21          | 12         | 21             | 12         |
| WC           | 25          | 25         | 25             | 25         |
| <b>Total</b> | <b>237</b>  | <b>153</b> | <b>235</b>     | <b>153</b> |